

KLEEV

SHEET METAL FABRICATION

PANEL | ENCLOSURES | DRAW-OUT COMPONENTS



INTRODUCTION

ABOUT US

KLEEV USA INC having manufacturing division in Middle East, United Arab Emirates.

Our sheet metal division is a grassroots solution provider for inception to finished products, with the dedicated team of design, fabrication, quality assurance with the optimization of cost and delivery time.

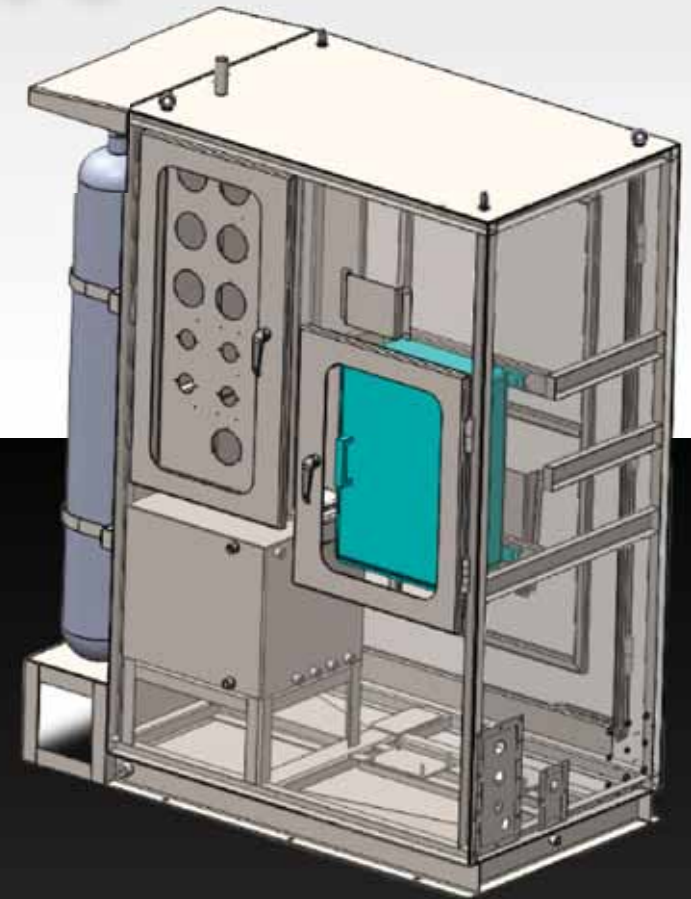
Conveniently located at Jebel Ali Free Zone, with ample floor area for multiple activities. Huge storage facility enables us for ample inventory for raw material. Factory serves requirements of both domestic and regional markets.

We are well equipped to serve domestic as well as regional customers. All products are ISO 9001, ISO 14001 & OHSAS 18001 certified with ATEX & IECEx Certification.

"An indigenous manufacturer of sheet metal fabrication products."



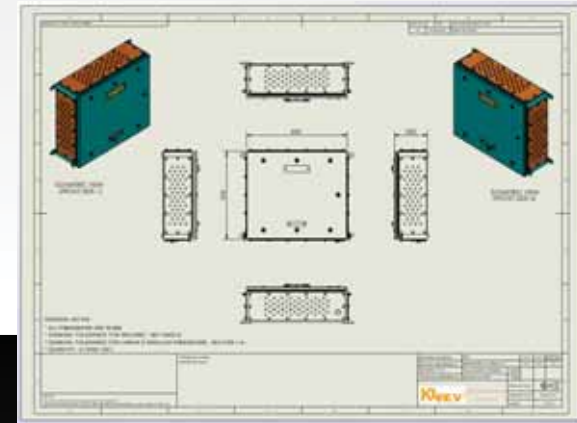
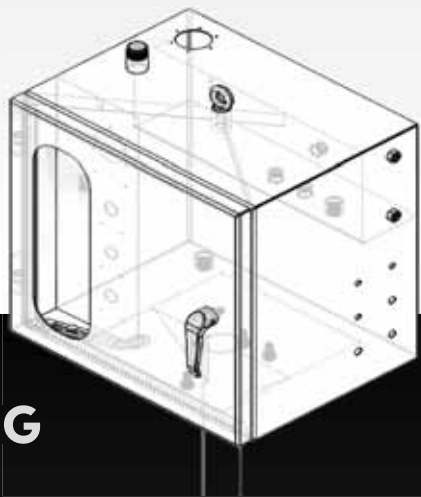
IN HOUSE DESIGN CAPABILITIES



We are capable to design Ex-Proof Sheet Metal Enclosure for Instruments & Electric Control Panel, Wellhead Control Panel, Analyzer Shelter, Canopy etc.

We have supplied variety of enclosure to an Oil & Gas, refinery, power plants,

DESIGN & MANUFACTURING



- Basic Design & Engineering
- Technical Advice
- Detailed Engineering with the aid of Solid Works & AutoCAD.
- Basic Part & Assembly Design with Engineering details (Develop view & Isometric view).

- Alternate solution for product joining method (Welded / Riveted).
- Detailed weld map drawing with welding symbols as per AWS 2.4.
- Assembly Bill of material with Exploded view.
- Selection / Sourcing of Equipment & Systems.

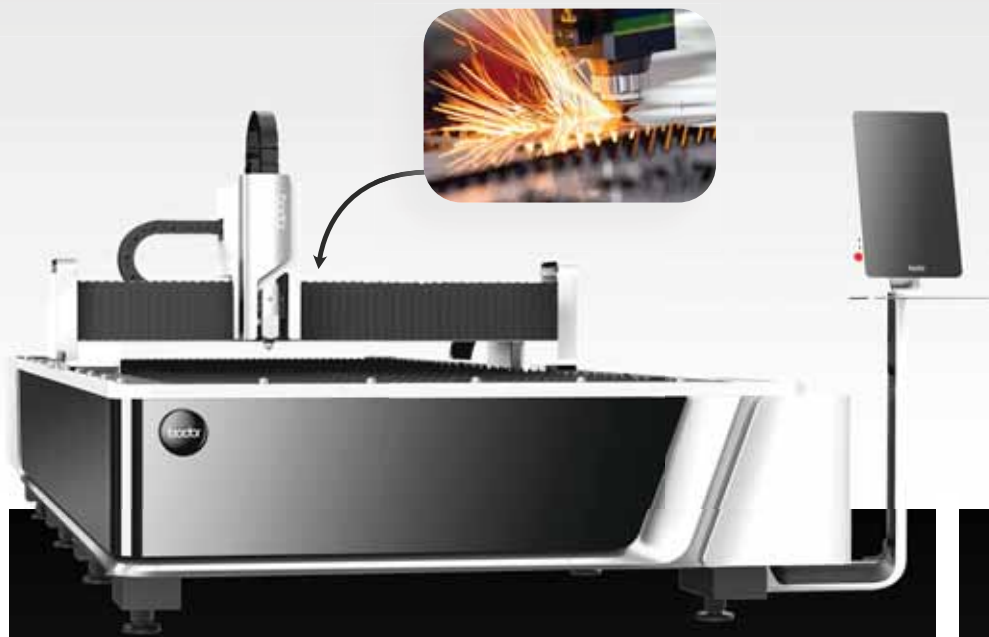
STATE OF ART MANUFACTURING



**HYDRAULIC
PRESS**

- Capacity: 80 Ton

LASER CUTTING MACHINE



- Dimension: 3048 x 1530 mm
- Source: 3 KW
- Thickness up-to 6 mm SS 316L
up-to 12 mm MS

CNC BENDING MACHINE



- CNC Press Brake
- Five Axes: Y1, Y2, X, R & Automatic Crowning
- Controller: DELEM DA 58T
- Capacity: 160 Ton
- Length: 3100 mm

ENCLOSURE PRODUCTS



EX-PROOF ENCLOSURES

Welcome to the realm of safety and reliability in sheet metal explosion-proof enclosure manufacturing. We are a leading company dedicated to designing and manufacturing top-tier, customized explosion-proof enclosures for a wide array of industries and applications. Which includes Empty, Terminal box and with electrical equipment – Local Control Panel (LCP) and accessories.



EX-PROOF ENCLOSURES WITH TERMINAL BOX & LOCAL CONTROL PANEL



- Material: MS / SS 304 / SS 304L / SS 316 / SS 316L
- Thickness: 1.5 TO 6 mm
- Gasket: UL / FM Approved
- IP: 66
- Cable Gland: Ex-Certified

- Minimum Size: 200 mm x 150 mm x 150 mm
- Maximum Size: 2000 mm x 800 mm x 800 mm
- Ex-Certified Component: CZ Electric Co. Ltd., Bartech GmbH, R. Stahl, FCG Flameproof, Schneider Electric, CMP Products, Cortem S.p.A., Eaton Electrical System, Delvalle Global Solutions, Rockwell Automation & Siemens.



WELLHEAD PANELS ENCLOSURES

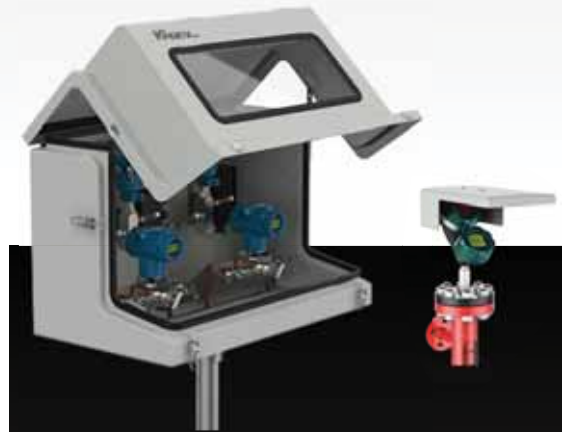
- Material: SS 304 / SS 316 / SS 316L
- Thickness: 1.5 TO 5 mm
- IP: 65 / 66
- Surface: Powder Coating / Epoxy Coating / Industrial Paint

ANALYSER SHELTER



- Material: SS 316L Cabin
- Thickness: 2 mm TO 5 mm
- Provisions for Electrical and Pneumatic Fittings
- Customised Solutions

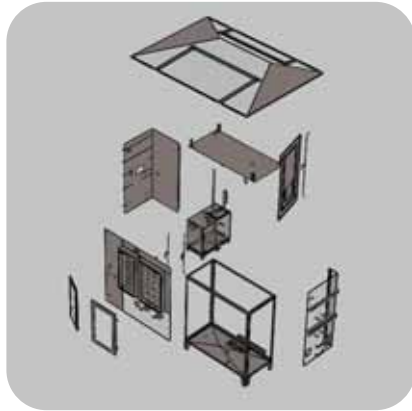
SUNSHADE & CANOPY



- Material: SS 304 / SS 316 / MS
- Thickness: 1.2 mm TO 2 MM
- Size: As per request

ASSEMBLING AND WELDING

ASSEMBLY



WELDING

- By BV Qualified Welders
- MIG / TIG / SPOT / STUD / Robot Welding
- Welding Machine: ESAB / EWM
- Capacity: 0.5 TO 12 mm



SURFACE TREATMENT AND PAINTING



SURFACE TREATMENT

- 100% LPT for weld joints include reservoir tank
- Procedure review-tank leak test
- Enclosure Pickling & Passivation
- Sand blasting of external surface visual check
- Adhesion test, Salt test, Profile check, Dust check
- Painting external surface visual & DFT Check
- IP 65 Test

PAINTING

- Sand blasting of external surface visual check
- Adhesion test
- Salt test, Profile check, Dust check
- Painting external surface visual
- DFT Check
- Special Painting for Oil & Gas Industry
- Daikin Zeffle IR1000 E
- Jotun Hardtop XP RAL 7032

CERTIFICATIONS



ISO 14001:2015

ISO 45001:2018

ISO 9001:2015

VALUABLE CLIENTELE



أرامكو السعودية
saudi aramco



إحدى شركات مؤسسة البترول الكويتية
A Subsidiary of Kuwait Petroleum Corporation



CONTROLS
&
ELECTRICS



KLEEV

HEAD OFFICE

KLEEV USA INC

5540 Centerview Drive, Suite 200,
Raleigh, NC 27606, USA

☎ +1 9199990087

✉ info@kleevusa.com

🌐 www.kleevusa.com

FACTORY & PLANT

KLEEV MIDDLE EAST FZE

P. O. BOX : 17259, Plot No. MOO767,
JAFZA (North), Dubai, U.A.E.

☎ +971-4-8803777

✉ info@kleevme.ae

🌐 Wwww.kleevme.ae

